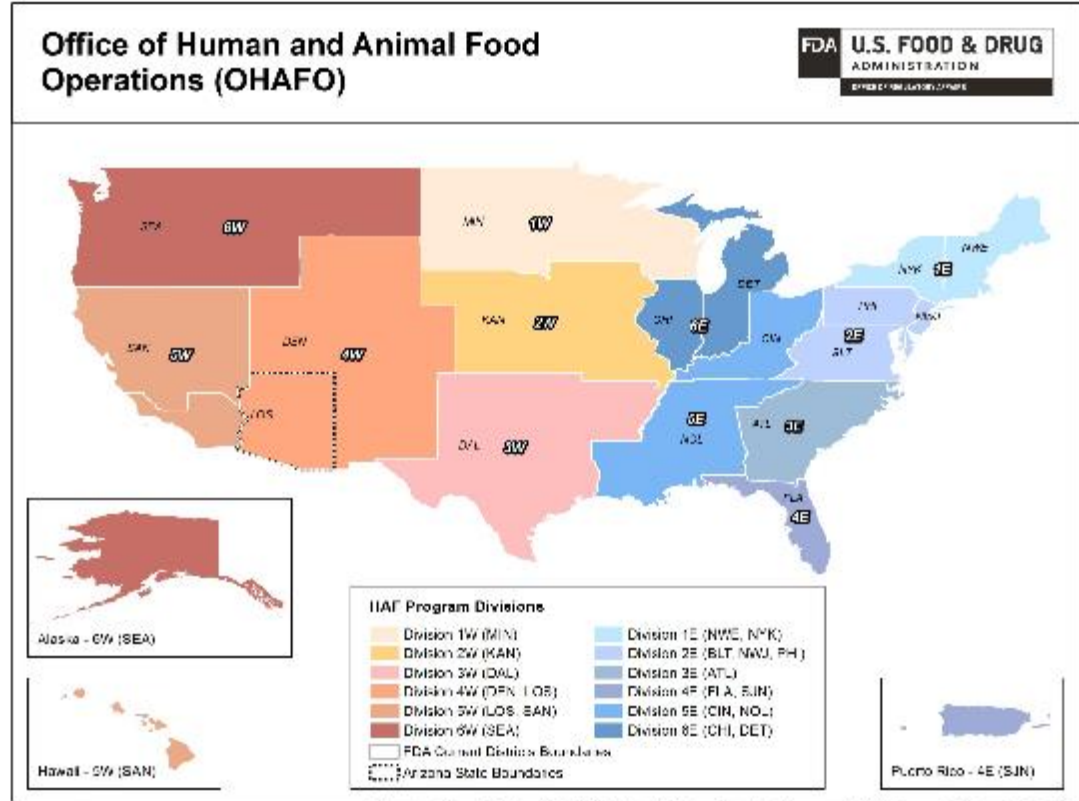


# WELCOME!



OHAFO West 6 Division Director / Seattle District Director, Miriam Burbach, is happy to welcome you to the 2018 Pacific Region Retail Food Seminar.



Source: OBA

Prepared by Office of Regulatory Affairs (ORA), Division of Planning, Evaluation & Management (DPEM), Program Evaluation Branch, 2017

## WHAT ARE WE NOW:

- May 2017 Office of Regulatory Affairs stood up program alignment
- Resulted in alignment of offices under program specific areas
- Seattle District – now OHAFO DHAFO West 6 Division

# OHAFO DHAFO West 6

Who we are:

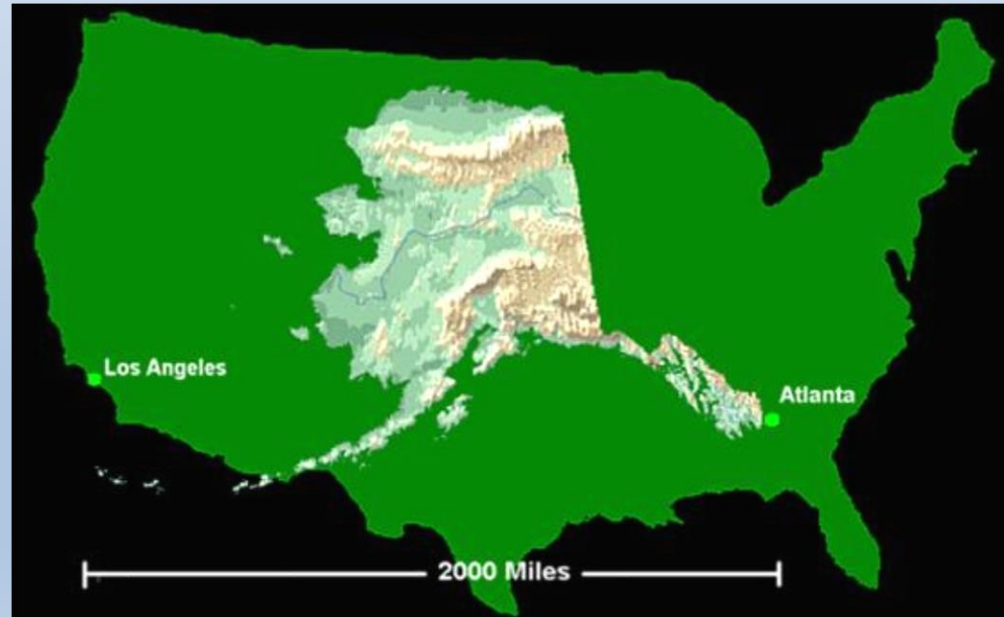
- Division Director – Miriam Burbach
- Director, Investigations Branch– Katie Alford
- Director, Compliance Branch – Lisa Althar
  - By the numbers:
    - Supervisor Consumer Safety Officers – 5
    - Compliance Officers – 3
    - State Liaisons – 3
    - Field Investigators – 36
    - Administrative Support – 8
    - Recalls, Complaints, and OEI Coordinator – 3



# OHAFO DHAFO West 6

## Where we are: (HAF Office Locations)

- Washington
  - District / Division Office – Bothell
  - Puget Sound Resident Post – Seattle
  - Tacoma Resident Post
- Oregon
  - Beaverton Resident Post
- Montana
  - Helena Resident Post
- Idaho
  - Boise Resident Post
- Alaska
  - Anchorage Resident Post



# OHAFO DHAFO West 6



What we did: (FY 2017)

Inspections – 293 high-risk FSMA food inspections

Sample Collections – 780 of multiple commodities

Foreign Inspections – 54 inspections during 11 trips



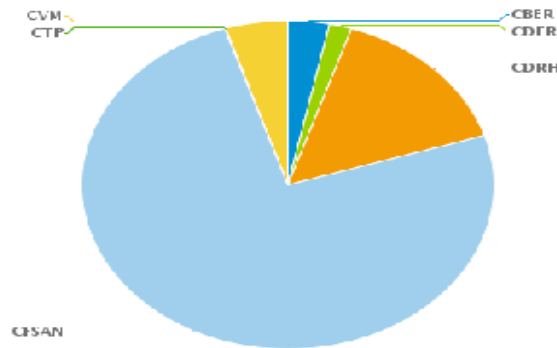
# OHAFO DHAFO West 6

## What we are doing: (FY 2018):

- PCHF – Preventive Controls in Human Food
- Modernized cGMP (21 CFR 117 & 21 CFR 507)
- PCAF – Preventive Controls in Animal Food (FY 2019)
- Produce Safety Inspections
- Sanitary Transport

## Number of Inspections in HAFW6 Area in FY 2018

Center Program Area	Position Class Desc	Count of Operations
CBER	FDA Center Employee	1
CBER	Investigator	77
CDER	FDA Center Employee	3
CDER	Investigator	37
CDER	Investigator - GDUFA	6
CDER	Microbiologist	2
CDRH	Field Administrative Personnel	3
CDRH	Investigator	72
CDRH	Radiological Health Specialist	8
CDRH	State Employee/FDA Contract Monitor	284
CFSAN	FDA Center Employee	1
CFSAN	Field Administrative Personnel	1
CFSAN	Investigator	591
CFSAN	State Employee/FDA Contract Monitor	1205
CTP	Investigator - Tobacco Cadre	2
CVM	Investigator	48
CVM	State Employee/FDA Contract Monitor	69
	<b>Total:</b>	<b>2390</b>



## Looking at the numbers...

- State contributions:
  - CFSAN – 1205 inspections
  - CVM – 69 inspections
  - CDRH – 284 inspections
- Global / Local Impacts
  - Kratom – smoke shops, distributors, re-packers and importers
  - Foodborne illness outbreaks – romaine lettuce, raw pet food



## FINAL THOUGHTS

- Enjoy the conference
  - Take the opportunity to network and make new contacts.
  - Reach out to your counterparts (city, state, federal)
    - We are in this together

